



INTRODUCTION OF COMPANY

“VIBA FLUID CONTROL” (VFC) an Integrated Management System Company comprising of ISO 9001:2015, ISO 14001:2015 & ISO 45001:2018, was promoted by Mr. Suresh Kumar in the year 1995, who was then having working experience of over two decades in valve manufacturing technology.

VFC is engaged in;

Designing, Development, Manufacturing and Supply of Quality Industrial Valves. VFC has the expertise and facilities to meet the growing demand of process industries for standard/customized valves for a wide range of application.

VFC have been supplying the valves in brand of “VIBA” to various core sectors like Petrochemicals, Thermal, Power Plant, Fertilizers, Refineries, Shipping and other Chemical Units both in the domestic as well as international market.



Mr. Suresh Kumar

Our wide range of products includes Gate, Globe, Check, Ball, Safety, Pressure Reducing, Plug & Needle Valves and “Y” type & Basket type Strainers etc. from sizes ranging from 15NB to 600 NB in Pressure Rating from 150# to 2500#, PN6 to PN160, ND40 & ND64 as per API, ANSI, ASME, BS and DIN standard in standard Cast Steel, Alloy Steel, Stainless Steel, Forged Steel & also in Exotic materials. The Valves can be supplied with Electric Actuators/ Pneumatic Actuators/ Gear Operated. Butt Welded Ends, Stellite Seat & Disc, and Extended Spindle as per customer’s specifications.

The Company adheres to the applicable international standards of manufacturing and testing. Each department is headed by technically qualified and experienced people in the field of valve industry. We procure best quality raw materials and castings from best foundries.

Enclosures:

| Sr. No. | Document Name | Annexure | Page No. |
|---------|--|--------------|----------|
| 1. | Company Profile | Annexure I | 2 |
| 2. | Organization Chart | Annexure II | 3 |
| 3. | Range of Products with Material of Construction | Annexure III | 4-5 |
| 4. | List of Machineries & Testing Equipment’s | Annexure IV | 6-7 |
| 5. | List of Manpower Employed | Annexure V | 8 |
| 6. | Sources of Raw Material | Annexure VI | 9 |
| 7. | Clientele | Annexure VII | 10-11 |
| 8. | Approvals | Annexure | 12 |
| 9. | Organization Photograph | Annexure X | 13-14 |
| 10. | Special Valves Manufactured & Supplied Photographs | Annexure XI | 15-18 |



VIBA FLUID CONTROL

Manufacturer of Quality Industrial Valve since 1995

Plot No.: W96, MIDC, Rabale, Navi Mumbai-400701, Maharashtra, INDIA
Mob: +91 9594896644 General email: Info@VibaFluidControl.com
Sales@VibaFluidControl.com Purchase@VibaFluidControl.com

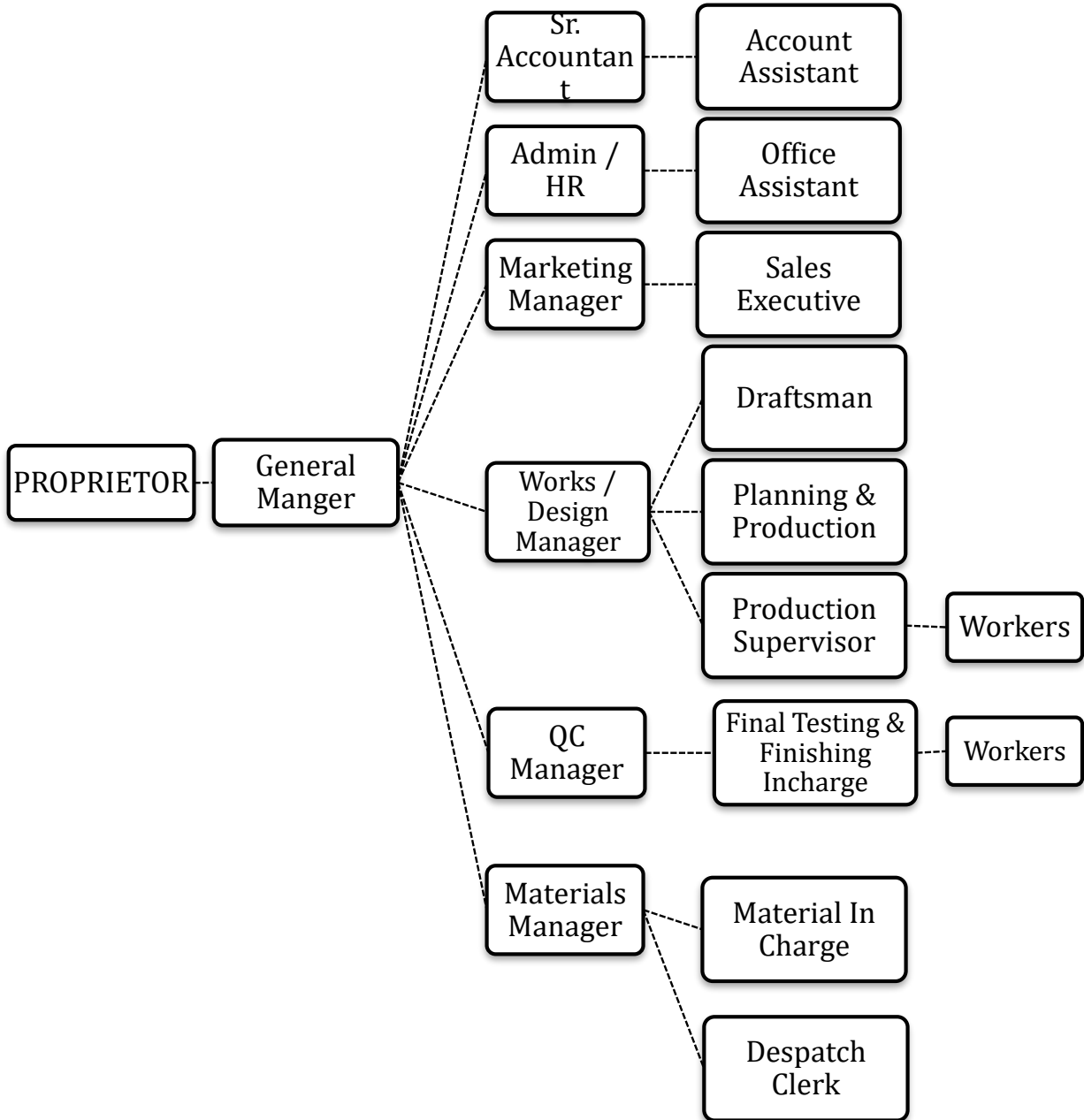


Annexure I – Company Profile

| | | | |
|-----|-------------------------------|---|--|
| 1. | Registered Name | : | VIBA FLUID CONTROL |
| 2. | Registered Office / Factory | : | W-96, MIDC, Industrial Area, Rabale, Navi Mumbai – 400701 Maharashtra, India. |
| 3. | Telephone | : | +91 22 27604649, 27603427 |
| 4. | Fax | : | +91 22 27604654 |
| 5. | Email | : | sales@vibafluidcontrol.com, info@vibafluidcontrol.com |
| 6. | Web Site | : | www.vibafluidcontrol.com |
| 7. | Name of Proprietor | : | Mr. K. Suresh Kumar |
| 8. | Scope of Works | : | Design, Manufacture & Supply of Industrial Valves |
| 9. | Plant Area | : | 6000 sq. feet |
| 10. | Factory License No | : | 10007338 Dtd: 25/12/2018 |
| 11. | Sales Tax No. | : | 27330010194C w.e.f. 1/4/2006 |
| 12. | GST NO | : | 27ANBPK8662J1ZM |
| 13. | Importer – Exporter code No. | : | 0305030850 Dtd: 25/07/2005 |
| 14. | Excise Registration (ECC) No. | : | ANBPK8662JEM001 |
| 15. | Income Tax Account (PAN) No | : | ANBPK8662J |
| 16. | ESIC Registration No. | : | 34-2477-67 |
| 17. | SSI Registration No. | : | 270211203954 Dtd: 12.03.2012 |
| 18. | NSIC Registration No. | : | NSIC/MUM/GP/RS/V-203/MH |
| 19. | PF Registration No. | : | MH/116723 |
| 20. | Nearest Railway Station | : | Rabale (Navi Mumbai) |
| 21. | Nearest Trunk Road Link | : | Thane Belapur Road, 2 Kms. From Eastern Express Highway. |



Annexure II – Organization Chart



**Annexure III– Range of Products & Material of Construction****Table 1 - Gate & Globe Valve**

| Class | Gate Valve–Manufacturing acc. to std. BS1414, API600, API6D & API602. Testing as per API598 and BS6755 Part 1 standard. | | Globe Valve - Manufacturing acc. to std. BS1873 & BS5352. Testing as per API598 and BS6755 Part 1 standard. | |
|-------|---|--------------|---|--------------|
| | Cast Steel | Forged Steel | Cast Steel | Forged Steel |
| 150# | 2" to 36" | | 2" to 24" | |
| 300# | 2" to 24" | | 2" to 20" | |
| 600# | 2" to 16" | | 2" to 12" | |
| 800# | | ½" to 2" | | ½" to 2" |
| 900# | 2" to 16" | | 2" to 10" | |
| 1500# | 2" to 12" | ½" to 1 ½" | 2" to 8" | ½" to 1 ½" |
| 2500# | 2" to 8" | ½" to 1" | 2" to 6" | ½" to 1" |

Table 2 - Check & Ball Valve

| Class | Check Valve - Manufacturing acc. to std. BS1873 & BS5352. Testing as per API598 and BS6755 Part 1 standard | | Ball Valve - Manufacturing acc. to std. BS5351, API6D & API607 (Fire Safe Design). Testing as per BS6755 Part 1 standard. | |
|-------|--|--------------|---|--------------|
| | Cast Steel | Forged Steel | Cast Steel | Forged Steel |
| 150# | 2" to 24" | | ½" to 12" | |
| 300# | 2" to 20" | | ½" to 8" | |
| 600# | 2" to 16" | | ½" to 8" | |
| 800# | | ½" to 2" | | ½" to 2" |
| 900# | 2" to 16" | | | |
| 1500# | 2" to 12" | ½" to 1 ½" | ½" to 6" | ½" to 1 ½" |
| 2500# | 2" to 8" | ½" to 1" | ½" to 4" | ½" to 1" |

Table 3 - T"Y" Type Strainer

| Class | Y Type Strainer - Manufacturer's Standard | |
|-------|---|--------------|
| | Cast Steel | Forged Steel |
| 150# | ½" to 12" | |
| 300# | ½" to 10" | |
| 600# | ½" to 8" | |
| 1500# | ½" to 6" | |
| 2500# | ½" to 4" | |



Table 4 - Butterfly Valve & Plug Valve

| Class | Butterfly Valve (Wafer Type & Flanged Type) - Manufacturing according to standard AWWA C504 & BS5155. | | Plug Valve - Manufacturing acc. to std. API599, API6D & BS5353. Testing as per BS6755 Part 1 standard. | |
|-------|---|--------------|--|--------------|
| | Cast Steel | Forged Steel | Cast Steel | Forged Steel |
| 150# | 2" to 24" | | ½" to 16" | |
| 300# | 2" to 12" | | ½" to 10" | |
| 600# | | | ½" to 8" | |

Table 5 - Other Manufacturing Range Includes

| | |
|--|--------------------------|
| ➤ ND40 & ND64 Globe Valves as per DIN3230 Standard | ➤ Dual Plate Check Valve |
| ➤ Safety Relief Valve | ➤ Diaphragm Valve |
| ➤ Angle Globe Valve | ➤ Basket Type Strainer |
| ➤ Pressure Reducing Valve | ➤ Jacketed Type Valve |
| ➤ Wafer Type Check Valve | ➤ Flush Bottom Valve |
| ➤ Needle Valve | |

Table 6 - Material of Construction

| Castings Material Grade | | Forgings Material Grade | |
|-------------------------|----------------------|-------------------------|---------------------|
| ASTM A216 Gr. WCB | ASTM A352 Gr. LC1 | ASTM A182 Gr. F304 | ASTM A105 |
| NACE MR-0175 | ASTM A351 Gr. CF8 | ASTM A182 Gr. F304L | ASTM A350 – Gr. LF2 |
| ASTM A217 Gr. C5 | ASTM A351 Gr. CF8M | ASTM A182 Gr. F316 | ASTM A182 – Gr. F11 |
| ASTM A217 Gr. WC1 | ASTM A351 Gr. CF3 | ASTM A182 Gr. F316L | ASTM A182 – Gr. F22 |
| ASTM A217 Gr. WC6 | ASTM A351 Gr. CF3M | ASTM A182 Gr. F51 | |
| ASTM A217 Gr. WC9 | ASTM A351 Gr. CN7M | ASTM A182 Gr. F60 | |
| ASTM A352 Gr. LCB | ASTM A351 Gr. CD4MCu | | |
| ASTM A352 Gr. LCC | | | |

7. **Trim Material**—API Trim 1 to 14 are available.

8. **Special Requirements** - We also manufacture valves with:

- 8.1. Materials conforming to NACE(MR-0175-01) for Sour Service
- 8.2. ENP Coating for Corrosive applications.

9. **Notes:** Refer Product Catalog for Detailed Information of individual product

**Annexure I - List of Machinery and Testing Equipments**

| Sr. No | Type | Make | Capacity | Units | Qty |
|--------|--|---------------------|--|-------|-----|
| 1 | Air Compressor | Sonee | 5HP - 24 Cu. Ft. Tank | No. | 1 |
| 2 | Compressor | Toyo | | No. | 1 |
| 3 | Angle Grinder | Wolf | 7" Dia | No. | 1 |
| 4 | Arc Welding Machine | Memco | - | No. | 1 |
| 5 | Argon Welding Machine | Memco | - | No. | 1 |
| 6 | Welding Rectifier | EPIC Technologies | | No. | 1 |
| 7 | State of Art Hydro Pressure Testing Control Panel c/w Electronic Controls, Electronic Gauges and Pneumatic Booster Pumps | New Ray Engg. | 3 Beds for testing 150 to 2500# testing | Set | 1 |
| 7a | Booster Pump | Mercury Pneumatic | 5000PSIG (350 Kg/cm ²) | No. | 1 |
| 7b | Booster Pump | Mercury Pneumatic | 10000 PSIG (700 Kg/cm ²) | No. | 1 |
| 7c | Booster Pump | Mercury Pneumatic | 20000PSIG (1400 Kg/cm ²) | No. | 1 |
| 8 | State of Art Hydro Pressure Testing Equipment c/w Hydraulic Non-Compressive Clamping with Hydro and Pneumatic Testing of Flanged Valves | Creative Hydraulics | 2" to 6" (150 to 600 Class), 8" (150 and 300 Class), 10" (150 Class) | Set | 1 |
| 9 | State of Art Hydro Pressure Testing Equipment c/w Hydraulic Compressive Clamping with Hydro and Pneumatic Testing of Forged Steel Valves | Creative Hydraulics | 1/2" to 2" (800 to 2500 Class) | Set | 1 |
| 10 | Centre Lathe Machine | Maan | 24" | No. | 1 |
| 11 | Centre Lathe Machine | Atlas/PMW/Omega | 16" Cntr. Ht. & 8' Bed Lt. | No. | 4 |
| 12 | Centre Lathe Machine | Atlas | 15" | No. | 1 |
| 13 | Centre Lathe Machine | Anil | 8" Cntr. Ht. & 4' Bed Lt. | No. | 1 |
| 14 | Centre Lathe Machine | Atlas | 14" | No. | 1 |



| Sr. No | Type | Make | Capacity | Units | Qty |
|--------|---------------------------|---|--------------------------|-------|-----|
| 15 | Centre Lathe Machine | Atlas/ Mahendra/ Rajendra/ Syndicate | 12" | No. | 5 |
| 16 | Centre Lathe Machine | Atlas/ Rajendra/ Chandara | 10" Cntr.Ht. & 6' Bed Lt | No. | 3 |
| 17 | Centre Lathe Machine | Anil | 6" | No. | 1 |
| 18 | Drill Machine | Batliboi/ CSEPEL | 2" | No. | 2 |
| 19 | Drill Machine Automatic | Acumax | 1 1/4" | No. | 1 |
| 20 | Electric Hoist | - | 3 Tons | No. | 1 |
| 21 | Electric Hoist | - | 5Tons | No. | 1 |
| 22 | Flexible Shaft Grinder | Wolf | 1/2" | No. | 1 |
| 23 | Angle Grinder | Wolf | 4" | No. | 1 |
| 24 | Bench Grinder | Elmaco/ Vikas | | No. | 2 |
| 25 | Electric Straight Grinder | Rali Wolf | | No. | 1 |
| 26 | Grinding Machine | | 8" | No. | 1 |
| 27 | Drilling Machine | Prabhat | 38 mm | No. | 1 |
| 28 | Radial Drill Machine | Satyajyot | 38 mm | No. | 1 |
| 29 | Hardness Tester | Saroj | - | No. | 1 |
| 30 | Hydraulic Hacksaw Machine | Atlas | 8" | No. | 1 |
| 31 | Hacksaw Machine | JEW | 10" | No. | 1 |
| 32 | Lapping Machine | Hi Fin | 36" Bed Dia | No. | 1 |
| 33 | Milling Machine | | | No. | 1 |
| 34 | Boring Machine | Karam | | No. | 1 |



ISO 9001:2015
ISO 14001:2015
ISO 45001:2018
Certified by IRQS



Annexure V– List of Manpower Employed

| Sr. No. | Designation / Trade | Qty |
|---------|------------------------|-----------|
| 1. | Managing Director | 01 |
| 2. | General Manager | 01 |
| 3. | Works / Design Manager | 01 |
| 4. | Marketing Manager | 01 |
| 5. | QC Engineer | 01 |
| 6. | QC Inspector | 01 |
| 7. | Materials In-Charge | 01 |
| 8. | Production Supervisor | 01 |
| 9. | Skilled Workers | 13 |
| 10. | Unskilled workers | 03 |
| 11. | Office Staff | 06 |
| | Total | 30 |



Annexure VI – Sources of Raw Material

We ensure 100% quality assurance right from the beginning of manufacturing process i.e. by controlling our purchasing activity. Except Hardware, Paint and Consumables all the materials are procured with valid Material Test Certificate which is produced to clients as required.

We buy Castings, Forging, bar stock and other materials from reputed sources which are as follows:

Table 1 – Casting Source

| Name of Supplier | City State |
|----------------------------------|------------------------|
| Aditya Metals & Alloys Pvt. Ltd. | Halol, Gujarat |
| Amex Alloys Pvt. Ltd. | Coimbatore, Tamil Nadu |
| AMI Alloys | Ahmadabad, Gujarat |
| Aegis Steel Cast | Ahmadabad, Gujarat |
| General Foundries | Mumbai, Maharashtra |
| Essbee Technocast | Ahmadabad, Gujarat |
| Mouldtech- Ferro Cast Pvt.Ltd | Ahmadabad, Gujarat |
| Prragati Steel Cast | Shimoga, Karnataka |
| Space Alloys | Ahmadabad, Gujarat |
| S S Cast | Ahmadabad, Gujarat |
| M M Cast | Ahmadabad, Gujarat |
| Nawal Metal Cast | Ahmadabad, Gujarat |

Table 2 – Forging Sources

| Name of Supplier | City State |
|---------------------------|---------------------|
| Anandmayee Forgings | Ghaziabad, UP |
| Petrochem Industries | Mumbai, Maharashtra |
| Rajendra Forge Industries | Mumbai, Maharashtra |
| Rolex Forgings | Rajkot |
| Sumangal Forgings | Rajkot, Gujarat |

- 3. Bar Stock, other Components & Consumables** - We procure genuine products from genuine dealers / traders with valid test certificates.
- 4. Special Requirement** - However on specific request from the customers we can buy casting from their recommended supplier / manufacturer.

**Annexure VII – Clientele**

| Sr. No. | Company / Client | Location |
|--|---|--------------------------|
| Power Sector | | |
| 1. | Adani Power | Mundra, Gujarat |
| 2. | Reliance Power (2400MW Project) | Samalkot, AP |
| 3. | Tata Power Company Ltd – Thermal Generating Power Unit | Trombay, Maharashtra |
| 4. | Tata Power Company Ltd. – Hydro Generating Power Station | Khopoli, Maharashtra |
| 5. | Tata Power Company Ltd. – Hydro Generating Power Station | Bhira, Maharashtra |
| 6. | Tata Power Company Ltd. – Hydro Generating Power Station | Bhivpuri, Maharashtra |
| 7. | Usher Eco Power Ltd. | Mathura, UP |
| 8. | MAHAGENCO | Parli, Maharashtra |
| 9. | APGENCO | Nagarajunasagar, AP |
| 10. | Kuwait Ministry of Water and Electricity | Kuwait |
| 11. | Coastal Gujarat Power Limited (CGPL) | Kutch , Gujarat |
| 12. | Maithon Power Ltd. | Dhanbad, Jharkhand. |
| Oil, Gas& Petrochemicals Sector | | |
| 1. | Indian Oil Corporation Ltd. (IOCL) | Panipat and Mathura, UP |
| 2. | Indian Oil Corporation Ltd (IOCL) – Gujarat Refinery | Vadodara, Gujarat |
| 3. | Gas Authority of India Limited (GAIL) | Pata, UP |
| 4. | Oil & Natural Gas Corporation Ltd. (ONGC) | Karaikal, Andhra Pradesh |
| 5. | Aker Solutions | Batam, Indonesia |
| 6. | Rama Petrochemicals Ltd. | Mumbai, Maharashtra |
| 7. | Iran Petrochemicals | Iran |
| 8. | Econosto Mideast B.V | Dubai, UAE |
| 9. | Bridge & Roof Co. (India) Ltd. | Howrah, Kolkata |
| Chemical & Fertilizers | | |
| 1. | National Fertilizers Limited (NFL) | Vijaipur, MP |
| 2. | Rashtriya Chemical Fertilizers Ltd. (RCF) | Mumbai, Maharashtra |
| 3. | Indo Gulf Fertilizers (Aditya Birla Group) | Jagdishpur, UP |
| 4. | Projects Development India Limited (PDIL) | Noida, Delhi |
| 5. | Hindustan Organics Chemicals Ltd. | Rasayni, Maharashtra |
| 6. | Matix Fertilizer Pvt. Ltd | Mumbai, Maharashtra |
| 7. | Gujarat Narmada Valley Fertilizers & Chemicals Limited (GNFC) | Bharuch, Gujarat |
| 8. | Ramagundam fertilizers & Chemicals Ltd. | Karimnagar, Telangana |



VIBA FLUID CONTROL

Manufacturer of Quality Industrial Valve since 1995

Plot No.: W96, MIDC, Rabate, Navi Mumbai-400701, Maharashtra, INDIA
Mob: +91 9594896644 General email: Info@VibaFluidControl.com
Sales@VibaFluidControl.com Purchase@VibaFluidControl.com



| Sr. No. | Company / Client | Location |
|--------------------------------|---|-----------------------|
| Water Treatment Sectors | | |
| 1. | Ion Exchange Ltd. | Mumbai, Maharashtra |
| 2. | Driplex Water Engineering Limited | Noida, Delhi |
| 3. | VA-Tech Wabag | Pune, Maharashtra |
| Steel Industry | | |
| 1 | Sohar Steel LLC. | Muscat |
| Merchant Exporters | | |
| 1. | Siddhart Trading | Mumbai, Maharashtra |
| 2. | Summit Tech-Trade | Kochi, Kerala |
| 3. | Tricon Enterprises Pvt. Ltd. | Mumbai, Maharashtra |
| 4. | Value Line WLL | Bahrain |
| 5. | KSB Middle East FZE | Dubai, UAE |
| 6. | SUMTECH MULTILINE TRADING LLC | Abu Dhabi, UAE |
| EPC Contractors | | |
| 1. | Essar Projects (India) Limited. | Durgapur, West Bengal |
| 2. | Tata Projects Ltd. | Hyderabad, AP |
| 3. | Kriloskar Brothers Ltd. | Pune, Maharashtra |
| 4. | NSSL Limited | Nagpur, Maharashtra |
| 5. | BGR Energy Ltd. | Chennai, Tamilnadu |
| 6. | Dodsal Pvt. Ltd. | Mumbai, Maharashtra |
| 7. | ThyssenKrupp Industries India Pvt. Ltd. | Pune, Maharashtra |
| 8. | Bharat Pumps and Compressor Ltd. | Naini, Allahabad |
| 9. | Bhartiya Vehicles and Engineering Co. | Ghaziabad, UP |
| 10. | GACTEL Turnkey Pvt. Ltd. | Mumbai, Maharashtra |
| 11. | Raunaq International Ltd. | Faridabad, UP |
| Others | | |
| 1. | MSPL Ltd. | Hospet, Karnataka |
| 2. | Vijay Fire and Vehicles Ltd. | Mumbai, Maharashtra |
| 3. | Panam Engineers | Mumbai, Maharashtra |
| 4. | VVF India Ltd. | Taloja, Maharastra |
















VIBA FLUID CONTROL

Manufacturer of Quality Industrial Valve since 1995

Plot No.: W96, MIDC, Rabate, Navi Mumbai-400701, Maharashtra, INDIA
Mob: +91 9594896644 General email: Info@VibaFluidControl.com
Sales@VibaFluidControl.com Purchase@VibaFluidControl.com



Annexure – Approvals

| Vendor Approvals | | |
|------------------|---|-----------------------|
| Sr. No. | Company / Client / Organization – Vendor Code | Location |
| 1 |  Projects & Development India Ltd (PDIL) - P2144 | NOIDA, UP |
| 2 |  Tata Projects Limited (TPL) - VM10600631 | Secunderabad, AP |
| 3 |  Gujarat Narmada Fertilizers Company (GNFC) - 112710 | Baruch, Gujarat |
| |  Rashtriya Chemicals and Fertilizers Ltd (RCF) - 108727 | Mumbai & Thal, MH |
| 4 |  MAHAGENCO - 14150 | Parli, Maharashtra |
| 5 |  APGENCO - M508 | Nagarajunasagar, AP |
| 6 |  Bharat Pumps and Compressors Limited (BPCL) - 22149 | Naini, Allahabad |
| 7 |  Hindustan Organic Chemicals Limited (HOCL) - V1862 | Rasayani, Maharashtra |
| 8 |  Nuclear Power Corporation of India Ltd. (NPCIL) - VSR/1121 | Mumbai |
| 9 |  Department of Atomic Energy / Directorate of Purchase & Store / Central Purchase Unit - Government of INDIA – DPS/ REGN/ 32969/ MTL/ 2344 | Mumbai |
| 10 |  National Thermal Power Corporation Limited (NTPC) - 0001099885 | Unchahar, UP |
| 11 |  भारत परमाणु अनुसंधान केंद्र BHABHA ATOMIC RESEARCH CENTRE | Mumbai |
| 12 |  भारत हेवी इलेक्ट्रिकल्स लिमिटेड BHARAT HEAVY ELECTRICALS LTD. | Hyderabad, AP |

| Third Party Inspections / Approvals | | | |
|-------------------------------------|------------------------------|----|--------------------|
| 1. | TUV Rheinland, Mumbai | 5. | PDIL, Mumbai |
| 2. | SGS India Pvt. Ltd. , Mumbai | 6. | PRS Agency, Mumbai |
| 3. | Magnum Services, Mumbai | 7. | Crown Agencies, UK |
| 4. | Moody, Mumbai | 8. | DNV - GL |



Annexure X – Organisation Photographs



Factory Overview



Machine Shop



Machine Shop



Assembly Shop



Hydro Testing Setup



Hydraulic Hydro Testing Setup – Cast Steel Valves



Hydraulic Hydro Testing Setup – Forged Valves



VIBA FLUID CONTROL

Manufacturer of Quality Industrial Valve since 1995

Plot No.: W96, MIDC, Rabate, Navi Mumbai-400701, Maharashtra, INDIA
Mob: +91 9594896644 General email: Info@VibaFluidControl.com
Sales@VibaFluidControl.com Purchase@VibaFluidControl.com



ISO 9001:2015
ISO 14001:2015
ISO 45001:2018
Certified by IRQS



Painting Process



Packing Process



VIBA FLUID CONTROL

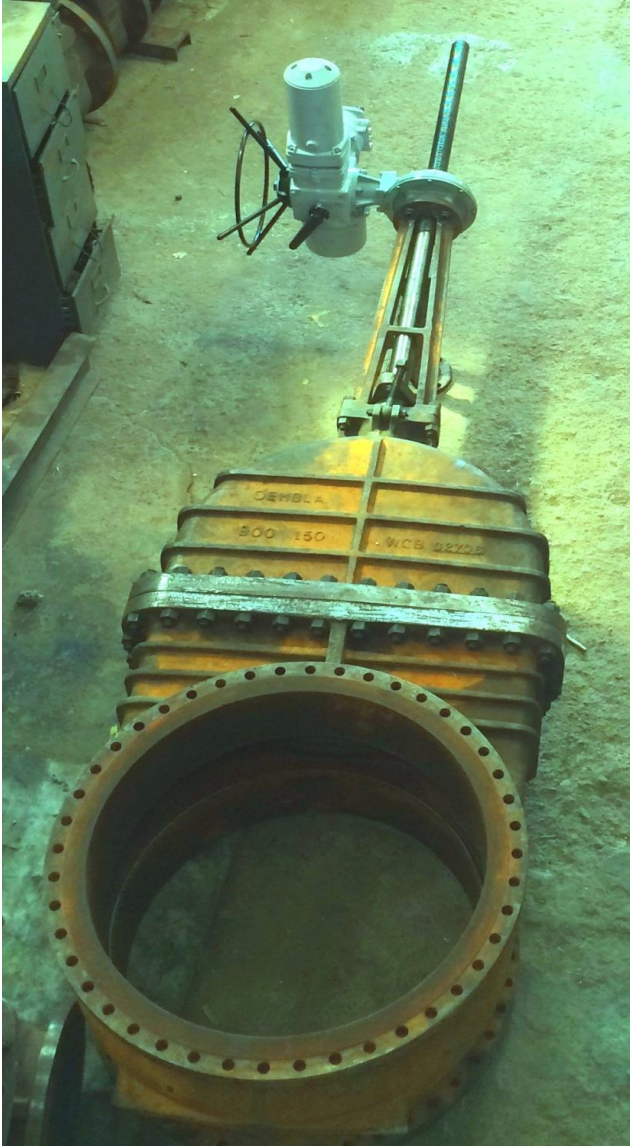
Manufacturer of Quality Industrial Valve since 1995

Plot No.: W96, MIDC, Rabate, Navi Mumbai-400701, Maharashtra, INDIA
Mob: +91 9594896644 General email: Info@VibaFluidControl.com
Sales@VibaFluidControl.com Purchase@VibaFluidControl.com



ISO 9001:2015
ISO 14001:2015
ISO 45001:2018
Certified by IRQS

Annexure XI – Special Valves Manufactured & Supplied Photographs



**36" Cast Carbon Steel ASTM A216 Gr. WCB Gate Valve, Flanged Ends, Class 150
Supplied to Jindal Project**



**16" 600# Cast Stainless Steel (CF8MN) SWING
CHECK VALVE**



16"300# Cast Carbon Steel (WCB) GLOBE VALVE



VIBA FLUID CONTROL

Manufacturer of Quality Industrial Valve since 1995

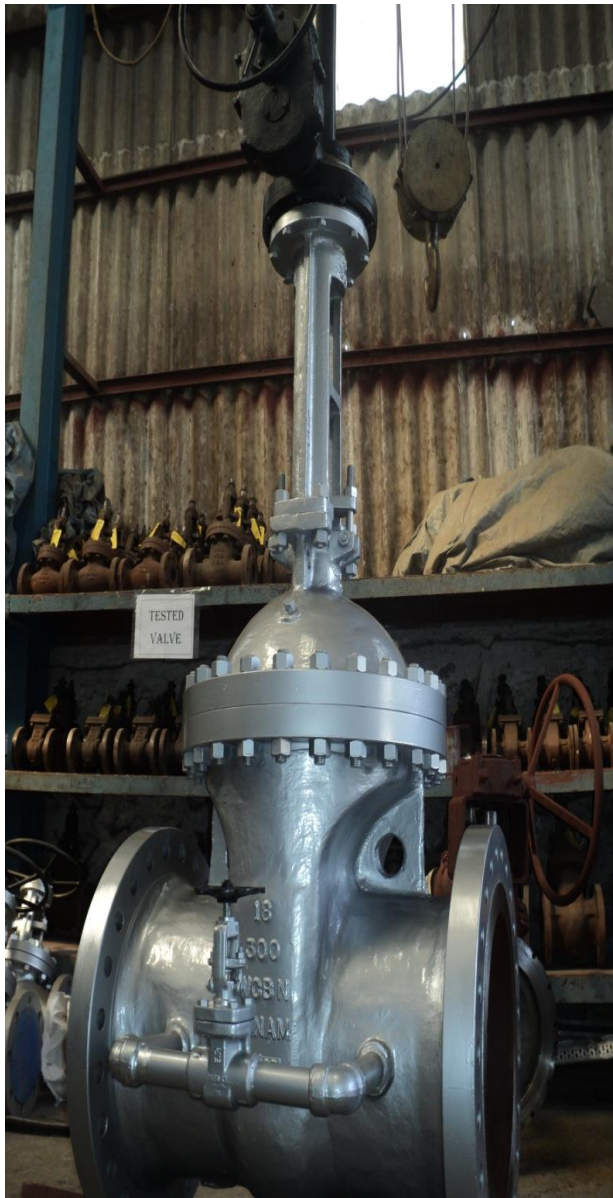
Plot No.: W96, MIDC, Rabate, Navi Mumbai-400701, Maharashtra, INDIA
Mob: +91 9594896644 General email: Info@VibaFluidControl.com
Sales@VibaFluidControl.com Purchase@VibaFluidControl.com



ISO 9001:2015
ISO 14001:2015
ISO 45001:2018
Certified by IRQS



MGMT. SYS.
BVA C.071



**18" 300# Gate Valve with By-Pass Provision
Supplied to Hyundai Plant**



**12" Bronze B62 Sluice Gate Valve
Supplied to ADNOC, UAE**



**2" TO 16" Cast Carbon Steel (WCB) Gate Valve & Swing Check Valve
SUPPLIED TO ECONOSTO**



VIBA FLUID CONTROL

Manufacturer of Quality Industrial Valve since 1995

Plot No.: W96, MIDC, Rabate, Navi Mumbai-400701, Maharashtra, INDIA
Mob: +91 9594896644 General email: Info@VibaFluidControl.com
Sales@VibaFluidControl.com Purchase@VibaFluidControl.com



ISO 9001:2015
ISO 14001:2015
ISO 45001:2018
Certified by IRQS



10" 600# Gear Operated Cast Carbon Steel (WCB) Gate Valve Supplied to ECONOSTO MIDDLE EAST OIL & GAS PROJECT



8" 900# Cast Low Alloy Steel (WC6) Pressure Seal Bonnet Gate Valve Supplied to SABIC, KSA



Extended Spindle Gate Valve



Gear Operated Butterfly Valves



3" 150# F316L Lift Type Check Valve



3/4" 800# Extended Body Gate Valve – to USA



1" (25mm) 1500# Extended Bonnet Gate Valve with Weld Neck Raised Face Flanges



1 1/2" (40mm) 5% NAB Pressure Release Valve



3" 300# Extended Bonnet Gate Valve – to USA



1" (25mm) 1500# Pressure Seal Gate Valve